

# Hypertherm®

Compatible with:

HPR130®

HPR260®

## XD technology upgrade kit

for HyPerformance® Plasma HPR130 and HPR260



XD technology upgrade kit provides better hole quality, thicker piercing capability and enhanced flexibility with bevel and robotic applications for HPR130 and HPR260 plasma cutting systems

Since 1968, Hypertherm has had a single goal: cut the cost of cutting. The company's one and only focus is cutting technology. Its single-minded mission is to provide customers throughout the world with the best cutting equipment and service in the industry. That's why Hypertherm holds more major plasma cutting patents, and has more customers worldwide than any other brand.

Hypertherm has made it possible for manufacturers with older HPR systems to install an XD upgrade kit to deliver several important new benefits including: True Hole® technology for true bolt-hole precision, PowerPierce® technology for thicker piercing capability, True Bevel™ technology which eliminates the guesswork of bevel cutting and HDi™ technology for superior quality and consistency on stainless steel.

# XD technology upgrade benefits

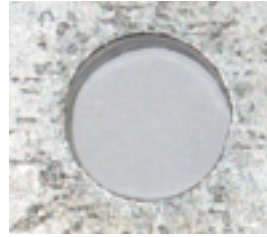
## Improved hole quality

### True Hole® technology

- Bolt-hole quality is delivered automatically without operator intervention.
- Narrows the gap with laser hole quality making the plasma process suitable for many jobs previously cut with laser.
- Virtual elimination of hole taper.
- Ding is reduced and biased to the outside of the hole.



With True Hole technology



Without True Hole technology



True Hole technology requires a HyPerformance® Plasma HPRXD® auto gas system along with a True Hole enabled cutting machine. Consult with your machine manufacturer for more details on specific components you may require.

## Thicker piercing capability

### PowerPierce® technology

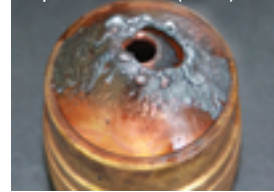
- Patented PowerPierce liquid cooled shield technology repels molten metal during piercing allowing mild steel production pierce of 32 mm (1-1/4") with HPR130XD and 38 mm (1-1/2") with HPR260XD.

300 pierces at 50 mm (2")



HPR400XD with PowerPierce technology

41 pierces at 45 mm (1-3/4")

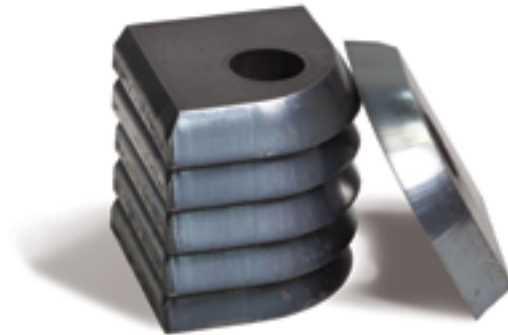


Competitor A without PowerPierce technology

## Improved beveling and robotic capability

### True Bevel™ technology

- Setup time and scrap material are greatly reduced for new job setup due to reduced trial and error.
- Scalable parameter tables with embedded equations allow users to add new angles with ease.
- Works with all common bevel head designs and covers V, A, and Top-Y style cuts for mild steel.
- Bevel cut sequence recommendation is provided for improved accuracy and consistent quality.



### Other robotic and bevel advantages

- Tapered bevel and robotic consumables 80 A, 130 A, 200 A, 260 A deliver improved access into angles and corners for applications ranging from 2 mm (16 gauge) to 38 mm (1-1/2") thickness.
- 114 mm (4-1/2") torch sleeve option with patented integrated bearing design that delivers infinite rotation in bevel and robotic applications.
- Integrated strain relief with rotational flexibility to improve robustness in high-flex applications.



### HDi™ thin stainless steel technology

- Brings HyDefinition® cutting technology to thin stainless 3 mm to 6 mm (12 gauge to 1/4").
- Delivers extremely sharp top edge quality, shiny surface finish, and superior angularity with reduced angle variation.
- Advanced torch and consumable technologies deliver more consistent cut quality for the duration of consumable life.

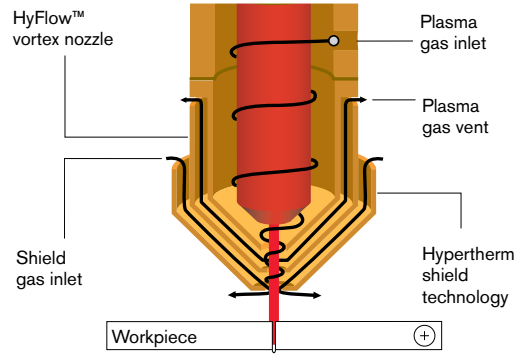
### Fine Feature™ mild steel parts

- New Fine Feature cut chart settings are designed to achieve:
  - Minimum angle deviation
  - Sharp top edge
  - Visibly smooth, low gloss finish
- HyPerformance® Plasma cuts parts with superior quality and consistency, virtually eliminating the cost of secondary operation.

### Increased consumable life

#### SilverPlus® technology

- Involves fusing a silver front-end onto the copper base, allowing the hafnium to erode twice as deep, dramatically extending electrode life.

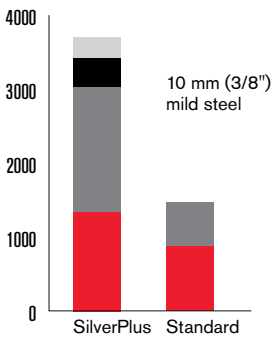


Fine Feature technology requires a HyPerformance Plasma HPRXD auto gas system.

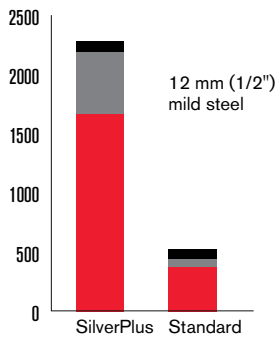
### Oxygen 20/20 parts life and cut quality (Cut quality over life of consumables)

20-second tests with 20% rampdown errors

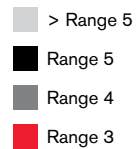
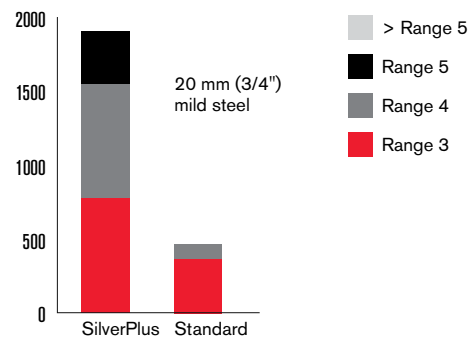
HyPerformance 130 A



HyPerformance 200 A



HyPerformance 260 A





Description	Part number
<b>1. Upgrade kit includes:</b>	228524
<ul style="list-style-type: none"> <li>▪ New control board with firmware for the power supply</li> <li>▪ Gas console firmware for both auto gas selection console and metering console, and tool to remove firmware chips</li> <li>▪ Adapter fittings for metering console, to connect new torch leads to old style connectors on metering console)</li> <li>▪ Field service bulletin</li> <li>▪ XD and PowerPierce labels</li> </ul>	

**2. New XD machine torch assembly includes a quick-disconnect torch and receptacle, torch sleeve, and 1 set of consumables:**

Description	Standard torch sleeve – length 181 mm (7")	Short torch sleeve – length 114 mm (4.5")	Extended torch sleeve – length 248 mm (9.75")	Bevel robotic sleeve – length 114 mm (4.5")	Part number
HPR130XD torch with list of 130 A bevel consumables	▪				228520
HPR130XD torch with list of 130 A consumables	▪				228633
HPR130XD torch with list of 130 A bevel consumables		▪			228989
HPR130XD torch with list of 130 A bevel consumables			▪		228990
HPR130XD torch with list of 130 A bevel consumables				▪	428311
HPR260XD torch with list of 260 A bevel consumables	▪				228521
HPR260XD torch with list of 260 A consumables	▪				228634
HPR260XD torch with list of 260 A bevel consumables		▪			228991
HPR260XD torch with list of 260 A consumables			▪		228992
HPR260XD torch with list of 260 A bevel consumables				▪	428312

**3. New torch leads: bevel torch leads are also available**

Description	Part number
Standard torch leads, 2 m / 6'	228291
Standard torch leads, 3 m / 10'	229292
Standard torch leads, 4.5 m / 15'	228293
Standard torch leads, 6 m / 20'	228294
Standard torch leads, 7.5 m / 25'	228295
Standard torch leads, 10 m / 35'	228296
Standard torch leads, 15 m / 50'	228297
Standard torch leads, 20 m / 65'	228547

**4. IHS ohmic contact wire, necessary for ohmic sensing:**

Description	Part number
IHS ohmic contact wire, 3 m / 10'	123983
IHS ohmic contact wire, 6 m / 20'	123984
IHS ohmic contact wire, 7.5 m / 25'	123985
IHS ohmic contact wire, 9 m / 30'	123986
IHS ohmic contact wire, 12 m / 40'	123987
IHS ohmic contact wire, 15 m / 50'	123988
IHS ohmic contact wire, 23 m / 75'	123989
IHS ohmic contact wire, 30 m / 100'	123990
IHS ohmic contact wire, 45 m / 150'	123991

True Hole requires HPRXD auto gas selection console 078533.

For location nearest you, visit:  
[www.hypertherm.com](http://www.hypertherm.com)

Hypertherm, HyPerformance, HPR, PowerPierce, True Hole, True Bevel, HDi, HyDefinition, HyFlow, Fine Feature and SilverPlus are trademarks of Hypertherm Inc. and may be registered in the United States and/or other countries. All other trademarks are the properties of their respective owners.

One of Hypertherm's long-standing core values is a focus on minimizing our impact on the environment. Doing so is critical to our, and our customers', success. We are always striving to become better environmental stewards; it is a process we care deeply about

© 9/2016 Hypertherm Inc. Revision 3  
 880790



**Hypertherm**<sup>®</sup>  
 SHAPING POSSIBILITY™

