

POLYFIL Series

TIG - External wire feeder

Cold wire feeder for orbital welding



POLYSOUDE
THE ART OF WELDING

POLYFIL Series

TIG - External wire feeder

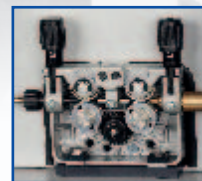
Cold wire feeder for orbital TIG welding

Advantages

- ▶ Compatible with all Polysoude power sources and welding heads
- ▶ Closed loop regulation to ensure precise wire feeding
- ▶ Directly controlled by the power source, no external power supply is required
- ▶ Adjustable rollers
- ▶ Closed, protected wire spool
- ▶ Carry handle



POLYFIL-3



Polyfil-3 drive mechanism



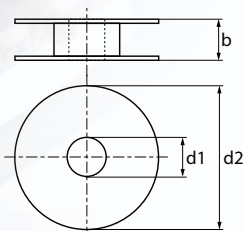
POLYFIL Compact



Polyfil Compact drive mechanism with wire straightening system

Technical specifications

	POLYFIL-3	POLYFIL Compact
Compatible for wire spool Weight and diameter	15 kg / 300 mm (11.82") 5 kg / 200 mm (7.87")	1.5 kg / 100 mm (3.94")
Wire diameter	0.8 mm (0.030") and 1.0 mm (0.039") other dia. on request	0.8 mm (0.030") other dia. on request
Wire feed speed (applies to all Polysoude™ power sources)	min. 150 mm/min max. 2552 mm/min	min. 94 mm/min max. 2068 mm/min
Cable length	9 m	
Dimensions L x W x H	620 x 300 x 450 mm (23.62" x 11.82" x 17.72")	320 x 305 x 165 mm (23.62" x 11.82" x 17.72")
Weight excluding wire spool	15 kg (33.7lbs)	7 kg (15.43 lbs)



Wire spool Dimensions in mm (in inch)			
Type	1.5 kg (3.31 lbs)	5 kg (11.02 lbs)	15 kg (33.7 lbs)
b	57 (2.25)	57 (2.25)	105 (4.14)
d1	52 (2.05)	52 (2.05)	52 (2.05)
d2	100 (3.94)	200 (7.87)	300 (11.82)

Options and accessories

- Wire liner
- Wire drive pressure rollers for different wire diameters